

# AEREA SUD di MICHELE BRUCOLI



VIALE TOMMASO COLUMBO, 17 - 70123 BARI

TEL. 080.5342454 - 080.5346061

FAX 080.5342441

CELL. 3920619352

SITO INTERNET: WWW.AEREA SUD.IT E.MAIL: tina@brucoli.it



DIN EN ISO 9001  
Certificato N° 71 100 D 107

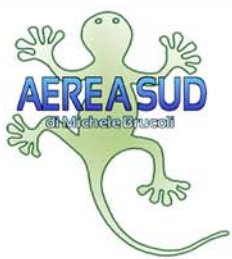
## IVECO TRAKKER GRU FASSI



PARTITA IVA 04249100720 - CODICE FISCALE BRC MHL 55B07 A662T - C.C.I.A.A. 302819 - ALBO AGENTI 6701

## Noleggjo Piattaforme Aeree

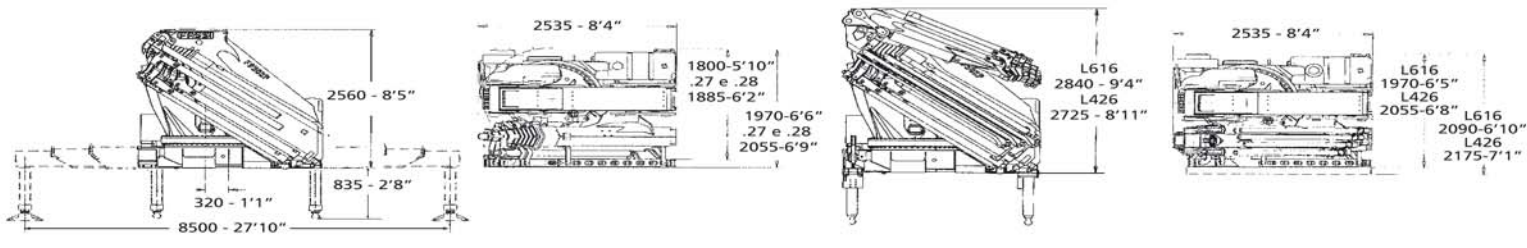
# AEREA SUD di MICHELE BRUCOLI



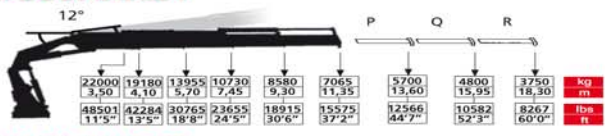
VIALE TOMMASO COLUMBO, 17 - 70123 BARI  
 TEL. 080.5342454 - 080.5346061  
 FAX 080.5342441  
 CELL. 3920619352  
 SITO INTERNET: WWW.AEREA SUD.IT E.MAIL: tina@brucoli.it



## IVECO TRAKKER GRU' FASSI



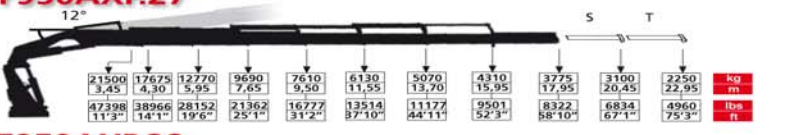
### F950AXP.24



### F950AXP.25



### F950AXP.27



### F950AXP.26



### F950AXP.28



### F950AXP.26 L616



### F950AXP.27 L426



### F950AXP.28 L426



	tm	lbs.ft	m	ft	m	ft	*	kNm	lbs.ft	Mpa	psi	l/min	gal/min	oil	gal	kg	lbs	mm	ft	mm	ft	mm	ft
F950AXP.24	80,10	579363	11,65	38'2"	7,20	23'7"	360	80,0	59021	32,5	4720	80/100	21/26	265	70	7300	16094	2535	8'4"	1800	5'10"	2560	8'5"
F950AXP.25	78,00	564174	13,85	45'5"	9,40	30'10"	360	80,0	59021	32,5	4720	80/100	21/26	265	70	7650	16865	2535	8'4"	1800	5'10"	2560	8'5"
F950AXP.26	76,70	554771	16,15	52'11"	11,60	38'0"	360	80,0	59021	32,5	4720	80/100	21/26	265	70	8000	7637	2535	8'4"	1800	5'10"	2560	8'5"
F950AXP.27	76,00	549708	18,25	59'10"	13,60	44'7"	360	80,0	59021	32,5	4720	80/100	21/26	265	70	8250	18188	2535	8'4"	1885	6'2"	2560	8'5"
F950AXP.28	75,30	544645	20,35	66'9"	15,60	51'2"	360	80,0	59021	32,5	4720	80/100	21/26	265	70	8450	18629	2535	8'4"	1885	6'2"	2560	8'5"
F950AXP.26 L616	76,70	554771	28,15	92'4"	20,55	67'5"	360	80,0	59021	32,5	4720	80/100	21/26	265	70	9430	20789	2535	8'4"	1970	6'6"	2840	9'6"
F950AXP.27 L426	76,00	549708	30,20	99'0"	22,45	73'7"	360	80,0	59021	32,5	4720	80/100	21/26	265	70	9450	20833	2535	8'4"	2055	6'8"	2725	8'11"
F950AXP.28 L426	75,30	544645	32,20	105'7"	24,55	80'6"	360	80,0	59021	32,5	4720	80/100	21/26	265	70	9650	21274	2535	8'4"	2055	6'8"	2725	8'11"

Dati e dimensioni sono forniti a titolo indicativo e non impegnativo - Toutes les données et descriptions sont fournies à titre indicatif, sans engagement - Unverbindliche Angaben, Konstruktionsänderungen vorbehalten  
 Data and descriptions are approximate and not binding - Datos y descripciones todos a título indicativo y no imperativo - Specificaties zijn niet bindend, wijzigingen derhalve voorbehouden

PARTITA IVA 04249100720 - CODICE FISCALE BRC MHL 55B07 A662T - C.C.I.A.A. 302819 - ALBO AGENTI 6701

# Noleggjo Piattaforme Aeree